



**R J Business Machines LTD**

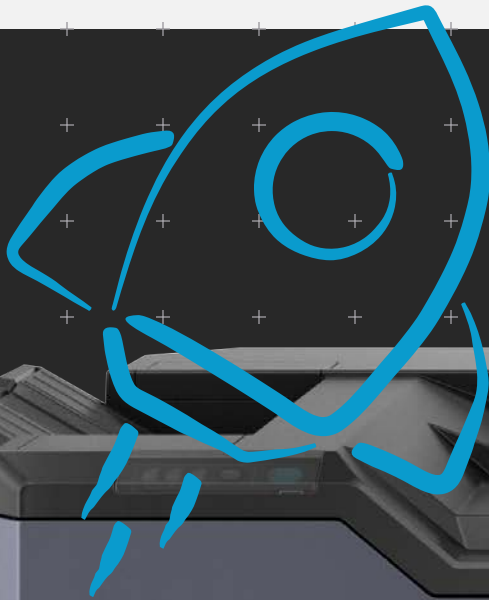
E: [sales@rjbmachines.com](mailto:sales@rjbmachines.com)

W: [rjbmachines.com](http://rjbmachines.com)

T: 905 - 405 - 1549

# Your Workplace Evolution

These monochrome additions to the Kyocera Evolution Series are designed to keep your costs low and your efficiency at its highest. With the latest security compliance, rapid print and scan speeds, and a more engaging user experience, they will optimize your workflows and maximize productivity. Join the Evolution today and keep your business at the cutting edge!



## **TASKalfa 4004i**

**Up to 40 Pages per Minute**

**Fast Scanning Options**

**10.1" Colour Touch Screen Panel**

**Kyocera Net Manager Ready**



## TASKalfa 4004i

### BASIC SPECIFICATIONS

**Configuration:** BW MFP - Print/Scan/Copy/Optional Fax

**Speed:** Letter: 40 ppm, Legal: 24 ppm, Ledger: 20 ppm (print only)

**Warm Up Time:** 17 seconds or less (power on)

**First Page Out:**

Copy: 4.5 seconds

Print: 5.1 seconds

**Display:** 10.1" Colour Touch Screen Control Panel

**Memory/Hard Disk Drive:** 4GB RAM/32GB SSD/320GB HDD Standard, 1TB HDD (option)

**Duplex:** Standard Stackless Duplex supports Statement (5.5" x 8.5") to Ledger (12" x 18"), 16 lb. Bond - 142 lb. Index (60 - 256gsm)

**Standard Output Tray:** Statement - 12" x 18"/500-sheets; up to 12" x 48" Banner (single sheet)

**Electrical Requirements:** 120V, 60Hz, 12A; 220-240V, 50/60Hz, 7.2A

**Typical Electricity Consumption (TEC):** 120V: .49 kWh/week; 220V: .31 kWh/week

**Dimensions:** 23.7" W x 26.1" D x 31.1" H

**Weight:** 182 lbs

**Maximum Monthly Duty Cycle:** 175,000 Pages per Month

### PAPER SUPPLY

**Paper Capacity:** Standard 1,150-sheets; Maximum 7,150-sheets

**Standard Paper Sources:** Dual 500-sheet Trays, 150-sheet MPT, Auto Selection/Switching

**Standard Paper Size:**

Tray 1 - 5.5" x 8.5" - 8.5" x 14" (statement to legal)

Tray 2 - 5.5" x 8.5" - 12" x 18", Custom Size

MPT: 5.5" x 8.5" - 12" x 18" (multiple); to 12" x 48" Banner (single)

**Optional Paper Sources:**

**PF-7140** Dual 500-sheet Tray Option - 5.5" x 8.5" - 12" x 18"

**PF-7150** Dual 1,500-sheet Tray Option - 8.5" x 11"

**PF-7120** 3,000-sheet Large Capacity Tray Option - 8.5" x 11"

**Paper Weight:**

Trays/MPT: 14 lb. Bond - 166 lb. Index (52 - 300gsm)

**Input Materials:** Standard/Optional Trays: Plain, Bond, Recycled, Preprinted, Vellum, Colour, Pre-Punched, Thick, Thin, High Quality, Letterhead, Envelope, Custom; MPT: Plain, Bond, Recycled, Preprinted, Vellum, Colour, Pre-Punched, Thick, Thin, High Quality, Transparency (OHP), Coated, Index Tab, Label, Letterhead, Envelope, Custom

### SECURITY SPECIFICATIONS

Local Authentication, Network Authentication, Encryption Communication (IPsec, HTTPS, TLS 1.3, LDAPS, SMTP/POP/FTPS over TLS, SNMPv3), TPM chipset (Trusted Platform Module), S/MIME, SCEP (auto certificate issuance/renewal), OCSP/CRL (certificate validation), Secure Boot (firmware authenticity verification), Run Time Integrity Check, Data Security Kit 10 enhances IPsec communication (support for FIPS 140-2), HDD and Memory Overwrite (7x) Mode and HDD Data Encryption (256 bit), Common Criteria (ISO/IEC-15408/EAL2), IEEE 2600.2

### PRINT SPECIFICATION

**Standard Controller:** ARM Cortex-A53/1.6GHz

**PDLs/Emulations:** PRESCRIBE, PCL6 (PCL-XL/PCL-5e), KPDL3 (PS3), XPS, OPEN XPS, PDF; Optional (UG 34): IBM ProPrinter, Line Printer, LQ-850

**Print Resolution:** Up to 4800 x 1200 dpi

**Fonts:** KPDL3, PCL6, Bitmap

**OS Compatibility:** Windows: 8.1/10/Server 2012/

Server 2012 R2/Server 2016/Server 2019;

Mac OS X v10.0 or later; Chrome OS

**Mobile Printing:** Apple AirPrint®, Mopria®, KYOCERA Mobile Print, KYOCERA MyPanel

**Interfaces:** Standard: 1000 Base-T/100-Base-Tx/10BASE-T (IPv6, IPv4, IPsec), 802.3az ready, High-Speed USB 3.0, 4 USB 2.0 Host Interfaces, 2 Expansion Slots,

IEEE 802.11b/g/n Wireless LAN (supports up to 98.5 feet);

Optional: IEEE 802.11a/b/g/n/ac (IB-37 for 2.4/5GHz), 10/100/1000BaseTX (IB-50 for Dual NIC); IEEE 802.11b/g/n

(IB-51 for Wireless LAN Interface (supports up to 328.1 feet)

**Network Print and Supported Protocols:** HTTPS, FTPS, SNMP v1/v2c/v3, Raw Port (Port 9100) TCP/IP, IPv4, IPv6, DHCP LPR, DNS, WSD Scan/Print

**Drivers:** KX Driver, PCL Mini Driver, KPDL Mini Driver, Network Fax Driver, TWIN Driver, WIA Driver, Status Monitor, Common Profile, Output to PDF, Security Watermark, Super Resolution, Colour Optimizer, MAC Driver, Chrome Printer Driver, Linux Driver, KX Driver with Distributed Printing, Windows Inbox Driver, SANE Driver

**Utilities:** KYOCERA Net Viewer, KYOCERA Net Device Manager, Quick Setup, KX PRESCRIBE Macro Generator, ID Register, Software Management Service, Upgrade Studio, Web Package Maker, Removal Tool, Wi-Fi Setup Tool, PDF Direct Print, Command Center RX; Kyocera Net Manager (option)

### SCAN SPECIFICATION

**Scan Type:** Color and Black & White Scanner

**Scan Resolution:** 600/400/300/200 dpi, 200 x 100 dpi, 200 x 400 dpi

**File Formats:** TIFF, JPEG, XPS, OpenXPS, PDF/A-2.0

(MMR/IPG Compression/High Compression PDF);

Option: Scan Extension Kit Text Searchable PDF; MS Office File

**Connectivity/Supported Protocols:** 10 BASE-T/100

BASE-TX/1000 BASE-T (IPv6, IPv4, IPsec) TCP/IP,

Hi-Speed USB 3.0

**Scanning Functions:** Scan-to-Folder (SMBv3), Scan-to-Email,

Scan-to-FTPS over TLS, Scan-to-USB, PDF Digital Signatures,

WSD Scan, DSM/SANE Scan, TWIN Scan, Specified Colour

Removal, Border Erase, Preview

**Original Size:** Up to 11" x 17" (Glass)

**Drivers:** TWIN/WIA/DSM-SANE Driver/WSD Scan

### OPTIONAL DOCUMENT PROCESSORS<sub>2</sub>

**Acceptable Originals:** 5.5" x 8.5" - 11" x 17"

**DP-7150:** Reverse Auto Document Processor/140-sheets

Speed: Simplex: 80 ipm; Duplex: 48 ipm (BW/Colour)

Weight: Simplex: 13 lb. Bond - 90 lb. Index (35 - 160gsm)

Duplex: 16 lb. - 32 lb. Bond (50 - 120gsm)

**DP-7160 (with multi-feed detection):**

Dual Scan Document Processor/320-sheets

Speed: Simplex: 137 ipm; Duplex: 274 ipm (BW/Colour)

Weights: Simplex: 13 lb. Bond - 120 lb. Index (35 - 220gsm)

Duplex: 16 lb. - 120 lb. Index (50 - 220gsm)

**DP-7170 (with multi-feed and staple detection):**

Dual Scan Document Processor/320-sheets

Speed: Simplex: 137 ipm; Duplex: 274 ipm (BW/Colour)

Weights: Simplex: 13 lb. Bond - 120 lb. Index (35 - 220gsm)

Duplex: 16 lb. - 120 lb. Index (50 - 220gsm)

### COPY SPECIFICATIONS

**Copy Resolution:** 600 x 600 dpi

**Image Mode:** Text, Photo, Text/Photo, Graphic/Map

**Continuous Copy:** 1 - 9,999

**Additional Features:** Auto Magnification, Auto Paper Select,

Combine Copy, Mirror Image, Rotate Copy, Border Erase,

Split Copy, Margin Shift, Page Number, Form Overlay,

Blank Page Skip, Specified Colour Removal, Proof Copy, Preview,

ID Card Copy

**Job Management:** 1,000 User Codes, Job Build, Shortcut Keys,

Repeat Copy

**Magnification/Zoom:** Full Size, 4 Reduction, 4 Enlargement

Preset Ratios, 25 - 400% in 1% Step Increments

**Document Box:** Custom/Job/USB Drive Box, Fax Box

(w/option)

### OPTIONAL FAX SPECIFICATIONS

**Fax Type:** Fax System 12 (option)

**Type/Data Compression:** G3 Fax/MMR, MR, MH, JBIG

**Transmission Speed/Modem Speed:** Less than

3 seconds/33.6 Kbps

**Fax Memory:** Standard 170 MB

**Driver:** Network Fax Driver

**Fax Functions:** Network Fax, Duplex Transmission and

Reception, Encrypted Transmission and Reception,

Polling Transmission and Reception, Broadcast,

Fax Server Integration, Fax Dedicated Paper Feed Tray,

Fax Forwarding to email or file

### SOLUTIONS AND SERVICES

#### Remote Management

Kyocera Fleet Services ready! A highly secure cloud-based monitoring solution that offers real-time visibility into your fleet. Optimize device uptime and be notified when to replenish supplies. Streamline billing with seamless 3rd party application integration, allowing you to focus solely on your business.

#### Printing Software

Cost Control & Security

Cloud & Mobile

Printer Management

#### Content Services

Scan & Connect

Intelligent Process Automation

Enterprise Content Management

#### IT Solutions

Technology Solutions

Including solutions for Cloud and Data Centers

Network Infrastructure

Cybersecurity Solutions

Collaboration Solutions

#### Consulting Services

Including IT Health Check

CIO as a Service

Healthcare Compliance

Backup and Recovery Planning

#### Professional Services

Including Design and Architecture

Project Implementation

Project Management

#### Managed Services

Including Help Desk Services

Retainer Services and On-site Support

## Output & Finishing Options<sup>3</sup>

### OPTIONAL 250 SHEET INNER SHIFT TRAY JS-7100

**Stack Capacity:** 250-sheets

**Paper Size:** 8.5" x 11" – 11" x 17"

**Paper Weight:** 14 lb. Bond – 166 lb. Index (52 – 300gsm)

### OPTIONAL 500 SHEET INTERNAL FINISHER DF-7100<sub>4</sub>

**Stack/Staple Capacity:** 500-sheets/50-sheets

**Paper Size:** 5.5" x 8.5" – 12" x 18"

**Paper Weight:** 14 lb. Bond – 166 lb. Index (52 – 300gsm)

**Edge Staple Position:** 3 Positions: Front: 1 Staple,

Edge: 1 Staple, Face: 2 Staples

**Optional Punch: PH-7100** 2/3 Hole Punch Unit,

supports 5.5" x 8.5" – 12" x 18"; 14 lb. Bond – 166 lb. Index

**Dimensions:** 19.4" W x 21" D x 6.9" H

### OPTIONAL 1,000 SHEET FINISHER DF-7120<sub>4</sub>

**Stack/Staple Capacity:** Main Tray: 1,000-sheets/50-sheets (up to 24 lb. Bond [90gsm])

**Paper Size:** 5.5" x 8.5" – 12" x 18"

**Paper Weight:** 14 lb. Bond – 166 lb. Index (52 – 300gsm)

**Edge Staple Position:** 3 Positions: Top Left, Bottom Left, Center Bind

**Optional Punch: PH-7A** 2/3 Hole Punch Unit,

supports 5.5" x 8.5" – 12" x 18"; 14 lb. Bond – 166 lb. Index

**Dimensions:** 21.6" W x 24.4" D x 41.3" H

### OPTIONAL 4,000 SHEET FINISHER DF-7140<sub>4</sub>

**Stack/Staple Capacity:** Main Tray (A): 4,000-sheets;

Sub Tray (B): 200-sheets/65-sheets (up to 24 lb. Bond [90gsm])

**Paper Size:** 5.5" x 8.5" – 12" x 18"

**Paper Weight:** 14 lb. Bond – 166 lb. Index (52 – 300gsm)

**Edge Staple Position:** 3 Positions: Top Left, Bottom Left, Center Bind

**Optional Punch: PH-7A** 2/3 Hole Punch Unit, supports

5.5" x 8.5" – 12" x 18"; 14 lb. Bond – 166 lb. Index

**Dimensions:** 29" W x 26" D x 42" H

### Optional Booklet Folder/Trifold Unit BF-730: (DF-7140)

**Booklet Folder:** supports 8.5" x 11", 8.5" x 14", 11" x 17"

**Fold Booklet (staple):** 16 lb. – 24 lb. Bond (60 – 90gsm)

20-sheets; 25 lb. – 28 lb. Bond (91 – 105gsm) 13-sheets;

Higher than 28 lb. Bond (Higher than 105 gsm) 1-sheet

**Fold Booklet (no staple):** 16 lb. – 24 lb. Bond (60 – 90gsm)

5-sheets; 25 lb. Bond – 72 lb. Index (91 – 120gsm) 3-sheets;

32 lb. Bond – 110 lb. Cover (121 – 256gsm) 1-sheet

**Trifold:** supports 8.5" x 11" only: 16 lb. – 24 lb. Bond

(60 – 90gsm) 5-sheets; 25 lb. Bond – 72 lb. Index

(91 – 120gsm) 3-sheets

### Optional Multi-Bin Mailbox MT-730(B): (DF-7140)

7 Trays; supports: 16 lb. Bond – 90 lb. Index (60 – 163gsm);

Stack Capacity per bin: 100-sheets: 5.5" x 8.5", 8.5" x 11";

50-sheets: 8.5" x 14", 11" x 17"

### OPTIONAL 4,000 SHEET FINISHER DF-7150<sub>4</sub>

**Stack/Staple Capacity:** Main Tray (A): 4,000-sheets;

Sub Tray (B): 200-sheets/100-sheets (up to 20lb. Bond [80gsm])

**Paper Size:** 5.5" x 8.5" – 12" x 18"

**Paper Weight:** 14 lb. Bond – 166 lb. Index (52 – 300gsm)

**Edge Staple Position:** 3 Positions: Top Left, Bottom Left, Center Bind

**Optional Punch: PH-7A** 2/3 Hole Punch Unit,

supports 5.5" x 8.5" – 12" x 18"; 14 lb. Bond – 166 lb. Index

**Dimensions:** 29" W x 26" D x 42" H

### Optional Booklet Folder/Trifold Unit BF-9100: (DF-7150)

**Booklet Folder:** supports 8.5" x 11", 8.5" x 14", 11" x 17"

**Fold Booklet (staple):** 14 lb. – 24 lb. Bond (52 – 90gsm)

20-sheets; 25 lb. – 28 lb. Bond (91 – 105gsm) 13-sheets;

Higher than 28 lb. Bond (Higher than 105 gsm) 1-sheet

**Fold Booklet (no staple):** 14 lb. – 24 lb. Bond (52 – 90gsm)

5-sheets; 24 lb. Bond – 28 lb. Index (91 – 105gsm) 3-sheets;

28 lb. Bond – 140 lb. Index (106 – 256gsm) 1-sheet

**Trifold:** supports 8.5" x 11" only: 14 lb. – 24 lb. Bond

(52 – 90gsm) 5-sheets; 25 lb. Bond – 28 lb. Index

(91 – 105gsm) 3-sheets

### ADDITIONAL OPTIONS

AK-7110 Bridge Unit Attachment Kit, JS-7100 Job Separator, HD-16 Large Capacity HDD (1TB), Banner Guide 10, Internet Fax Kit (A), Card Authentication Kit (B), Data Security Kit 10, Dual NIC (IB-50), Extended Range Wireless LAN NIC (IB-51), Thin Print option (UG-33), Printer Emulation option (UG-34), DT-730(B) Document Tray, Scan Extension Kit (A) for Text Searchable PDF; MS Office File, Keyboard Holder 10, Numeric Keypad (NK-7130), Cabinet Stand

<sup>1</sup> Requires PF-7140

<sup>2</sup> Only 1 Document Processor can be installed

<sup>3</sup> Only 1 Output Option can be installed

<sup>4</sup> Requires Bridge Unit Attachment Kit (AK-7110)

Specifications and design are subject to change without notice. For the latest on connectivity visit [kyoceradocumentsolutions.us](http://kyoceradocumentsolutions.us). TASKalfa, PRESCRIBE, Kyocera Net Manager, Kyocera Net Viewer, Kyocera Device Manager, PDF Direct Print, Command Center RX, and KX Driver are trademarks of The Kyocera Companies. Mac OS and AirPrint are trademarks of Apple, Inc. Mopria is a trademark of Mopria Alliance, Inc. Windows is a trademark of Microsoft, Inc. All other trademarks are the property of their respective owners.



Kyocera Document Solutions Partner

## R J Business Machines LTD

6625 Tomken Road, Unit #4,  
Mississauga, Ontario,  
L5T 2C2, Canada  
T: 905 - 405 - 1549  
E: [sales@rjbmachines.com](mailto:sales@rjbmachines.com)  
W: [rjbmachines.com](http://rjbmachines.com)



Website: [rjbmachines.com](http://rjbmachines.com)

Kyocera Document Solutions does not warrant that any specifications mentioned will be error-free. Specifications are subject to change without notice. Information is correct at time of going to press.

All other brand and product names may be registered trademarks or trademarks of their respective holders and are hereby acknowledged.

©2021 KYOCERA Document Solutions America, Inc.